

DEFY GRAVITY MEET-UP INFO PACK

Dear Guest,

Thank you for your interest in the "**Defy Gravity Meet-Up 2024 Edition**" event organised by **Wings Level**.

Back in 2020, two pilots had a big idea: to create a flight school focused on advanced training, especially in preventing loss of flight controls and mastering upset recovery techniques. This idea became a reality with **Wings Level**, officially starting in 2021 and fully operating by the end of 2022. Since then, we've successfully trained over 100 pilots.

To celebrate this achievement, we're excited to invite you to the **Defy Gravity Meet-UP 2024 Edition**. It's a gathering for pilots, aviation enthusiasts, and anyone curious about flying. Taking place in the stunning Swiss Alps at Raron aerodrome LSTA, it's a fantastic chance to meet, share experiences, and even chat with experienced airline pilots about joining this incredible world.

At the heart of the event is a focus on safety. We'll offer the opportunity to fly a real aerobatic aeroplane and recognise and recover from a fully developed spin!

We can't wait to welcome you to this special event, where we'll come together to celebrate our love for aviation and learn from each other.

Best regards,

Hampi and Andrea



GOALS AND PHILOSOPHY



The **Defy Gravity Meet-Up 2024 Edition** will be an opportunity for all pilots at any license level to meet together, participate to interesting safety related workshops and to receive specific and top notch practical training about spin awareness, recognition and recovery.

It will be as well a starting point for all aviation enthusiasts to meet pilots from different companies and type of operations and ask relevant questions on how to start this fantastic career.

For aviation enthusiasts several aeroplanes will be available at our static display area, where dedicated personnel will be available to explain and tell more about these incredible machines.



STATIC DISPLAYS



SP-YSR Yak-52

Producer : Yakowlew

Year of Production: 1979-1991

Cruise Speed: 420 km/h

Power: 400 Hp



Aero 1

Producer: Dufour Aerospace

Year of Production: 2015

Cruise Speed: 180 km/h

Power: 17kw

Endurance: 45 minutes



STATIC DISPLAYS



HB-ETI Comte AC-4

Producer: Alfred Comte

Year of Production: 1929

Cruise speed: 140 km/h

Power: 140 Hp



HB-PHX PA18 SuperCub

Producer: Piper

Year of Production: 1983

Cruise Speed: 160 km/h

Power: 180 Hp



PRACTICAL TRAINING



SPIN AWARENESS, RECOGNITION AND RECOVERY

For pilots interested in advancing their skills, Wings Level is excited to offer a remarkable opportunity: 20 minutes of flight time on our FA150 K aircraft, all for an incredible price of only 200,- CHF. This training will specifically target spin awareness, recognition, and recovery—a vital aspect of aviation safety. With limited seats available, reservations can be made through our website by scanning the dedicated QR code. Don't miss out on this chance to elevate your piloting proficiency with Wings Level!



Scan me to reserve my seat for the Spin awareness, recognition and recovery training



WORKSHOPS



At specific hours 3 workshops have been organised:

- 10:00 - 11:00 “Anatomy of the spin”
- 11:00 - 12:00 “The stall”
- 13:00 - 13:30 “Loss of control in flight during takeoff”
- 14:30 - 15:30 How to become a pilot: different licenses, one sky!

Workshops are free of charge, subject to change and open to everybody.



FOOD CORNER



Directly from the area the Briger Bier Brauerei will offer different type of street food: Sausages, Raclette cheese and much more.



HOW TO JOIN BY CAR

- **From Basel:** Take the A2 motorway towards Lucerne, then continue on the A2 towards Niederwald/Raron. Follow signs for Raron aerodrome.
- **From Zurich:** Take the A1 motorway towards Bern, then continue onto the A2 towards Niederwald/Raron. Follow signs for Raron aerodrome.
- **From Bern:** Take the A6 motorway towards Spiez, then merge onto the A8 towards Brig. Continue on the A9 towards Visp and exit towards Raron. Follow signs for Raron aerodrome.
- **From Geneva:** Head east on the A1 motorway towards Lausanne/Sion. Continue onto the A9/E62 towards Brig/Brig-Glis. Take exit 27-Sierre-Est toward Chippis/Brig-Glis/Visp. Follow signs for Raron aerodrome.

HOW TO JOIN BY PUBLIC TRANSPORT

- **From Basel, Zurich or Geneva:** Train to Brig or to Sion then train to Visp. From Visp take the Bus B494 to Raron, Bodmereia. From Bodmereia 5 minutes walk.



HOW TO JOIN BY AIR

PPR is required. Please scan the QR code at the bottom of each page to fill-in the landing request.

Raron aerodrome LSTA is located at the end of the wide valley of Wallis. In summer hot days with light winds and clear skies can be expected.

THREATS

High density altitude. Calculate carefully your performance both for landing and takeoff.

Heinzmann building located at RWY end 10. When landing on runway 10, turbulences can occur over this building (short final RWY 10). Departures from RWY 28 are performance sensitive.

High density altitude may be expected.



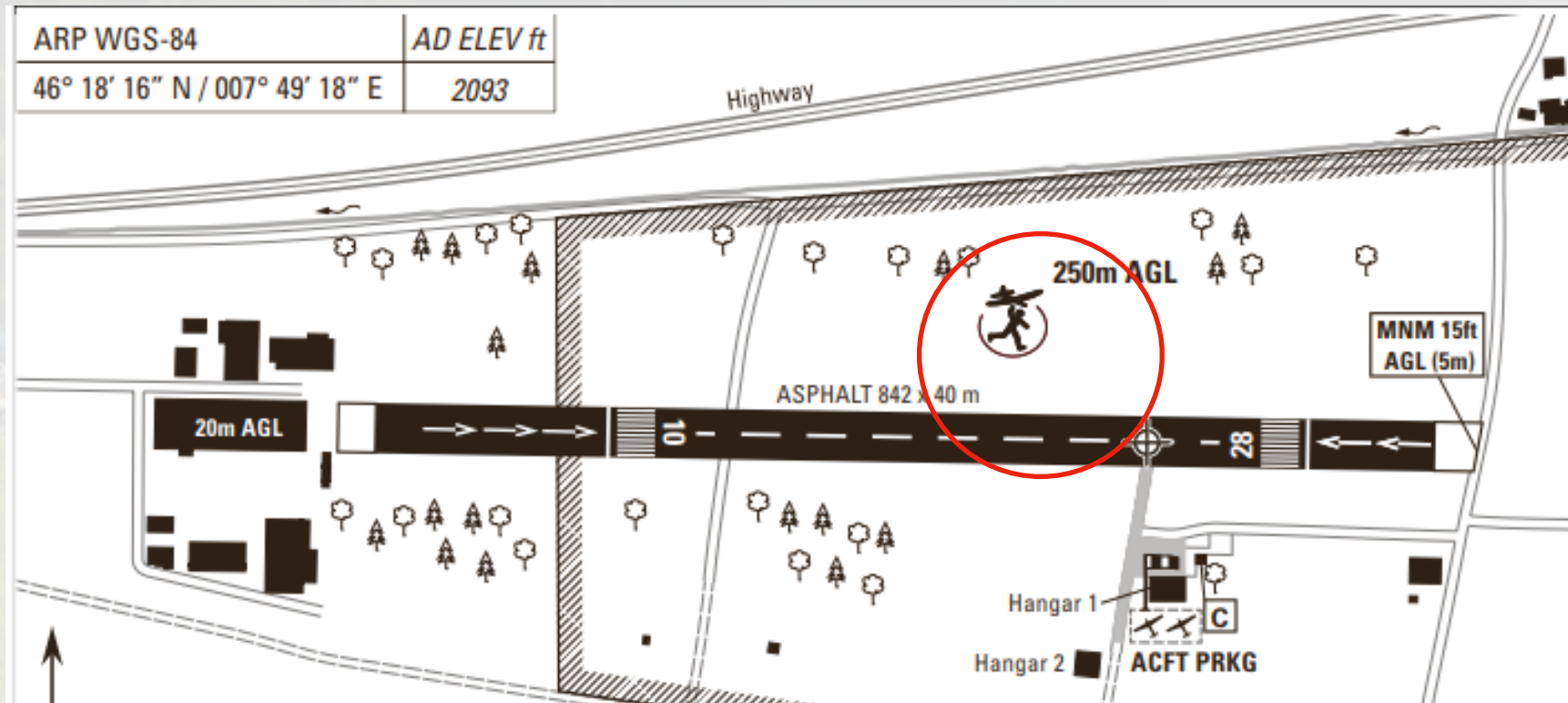
HOW TO JOIN BY AIR



A view from RWY 28 of the Heinzmann building



HOW TO JOIN BY AIR



HOW TO JOIN BY AIR

ARRIVALS

RWY 28

Preferred RWY for arrivals is RWY 28.

Traffic originating from west shall join downwind RWY 28 directly. Traffic from the east shall join up-wind at 3200 ft QNH and then downwind RWY 28.

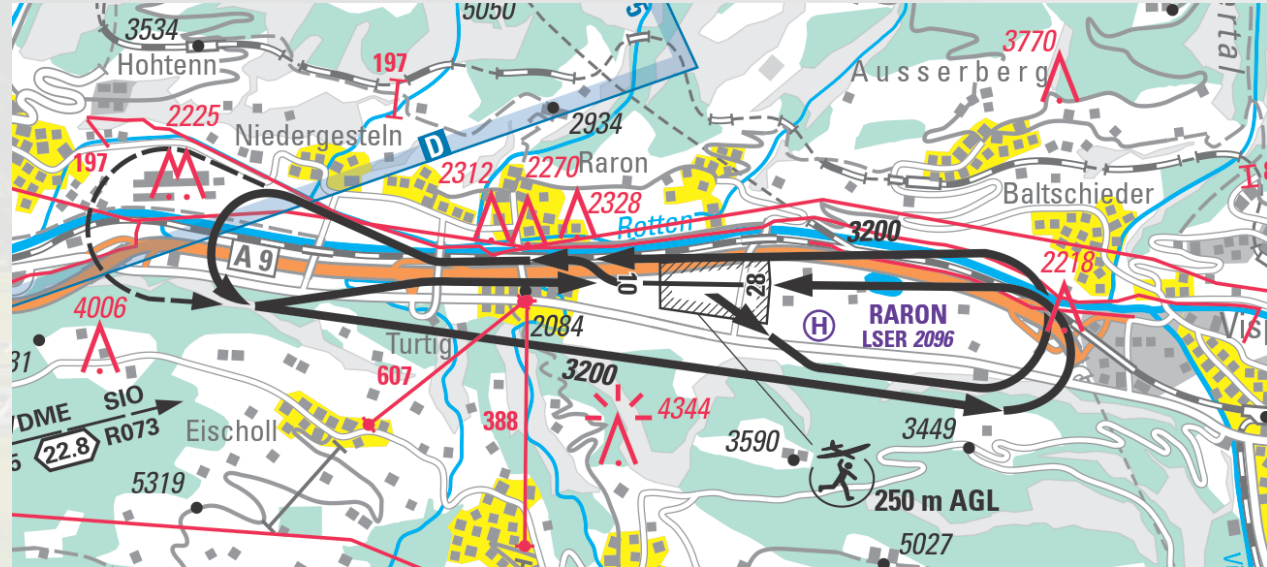
RWY 10

Runway 10 shall be used when tailwind component exceed 6 KTS.

Traffic originating from the west shall join the traffic pattern on up-wind at 3200 ft QNH and then left-end-downwind RWY 10. Special attention shall be given to the Heinzmann building.

Traffic from the east shall join directly left-end-downwind RWY 10 at 3200 ft QNH.

STRICTLY ADHERE WITH THE NOISE SENSITIVE AREAS!



HOW TO JOIN BY AIR

ON GROUND

RWY 28

After landing expedite vacating the runway via the main taxiway as depicted with the blue arrow.

RWY 10

After landing expedite vacating runway via main taxiway as depicted with the red arrow.

PARKING

Follow Marshaller instruction

LANDING FEES

Landing fees can be payed cash or via Twint at the Airport Authority (20 CHF).



HOW TO JOIN BY AIR

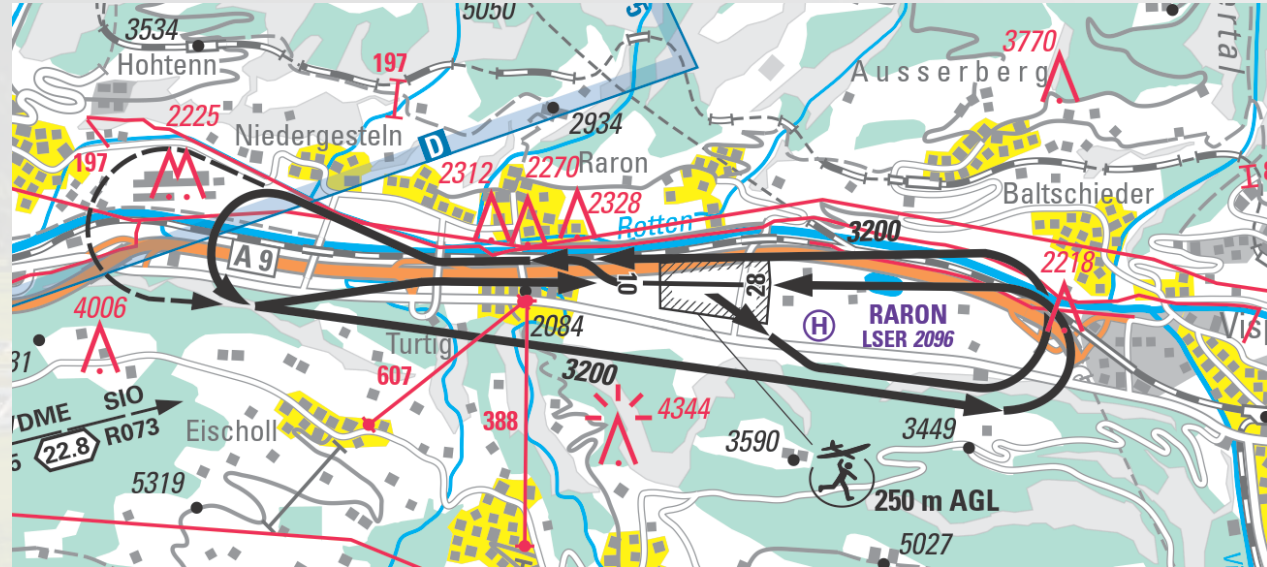
DEPARTURE

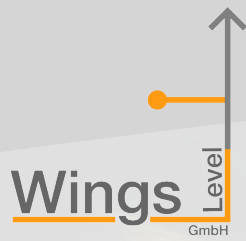
RWY 28

Follow the VAC avoiding the noise sensitive areas. ATTENTION to the Heinzmann building. In case of engine failure turn immediately to the right. Report if climbing on traffic pattern.

RWY 10

Immediately turn right as depicted on the VAC. Traffic leaving to the west shall climb on traffic patterns. Traffic leaving to the east can, if required climb on traffic pattern. Report if climbing on traffic pattern.



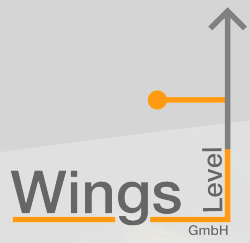


ABOUT WINGS LEVEL

Wings Level GmbH is a leading aviation company based in Switzerland, specialising in loss of control in flight prevention and Advanced Upset Prevention and Recovery Training (AUPRT). With a dedication to safety, innovation, and excellence, Wings Level GmbH is committed to advancing the standards of aviation training and promoting a culture of safety within the industry.

Free static display slots are still available. For static display requests, further information and requests write to: media@wingslevel.swiss





IN COLLABORATION WITH

